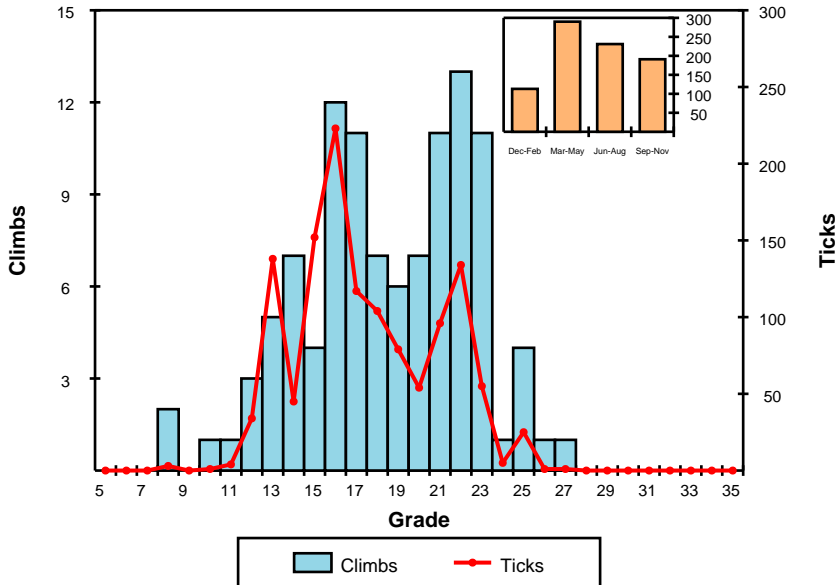


## Climbs and Ticks by Grade and by Season



## Route Statistics

Number of routes: 110  
Number of ticks: 1,288 (91% climbs ticked)

Hardest: [Carnivore](#) [27!]  
Busiest: [Miss Kandy Kane](#) [15]  
Highest Quality: [The Great Devoid\\*\\*](#) [22]

Average Free Grade: 19  
Average Length: 16 m (98% climbs with height)  
Average Quality: 4.2 (53% climbs with quality score)

Number of Sport Routes: 2  
Number of Boulder Problems: 2  
Number of Aid Routes: 1  
Number of Ice Routes: 0

Statistics are based on available information in the index of climbs at [www.thecrag.com](http://www.thecrag.com). Processes exist to continually improve the quality of this information, but do not guarantee such quality. DO NOT USE THIS DOCUMENT IF IT IS MORE THAN 3 MONTHS OUT OF DATE.

### The Good

Highest Quality Routes

- [The Great Devoid\\*\\*](#) [22]
- [Herb's Hammer\\*](#) [22]
- [Looking For The Sun\\*](#) [19]
- [The Great Barrier Reef\\*](#) [13]
- [Sea Of Fools\\*](#) [22]
- [Uzis On Speed\\*](#) [21]
- [Private Investigation\\*](#) [18!]

### The Bad

Most Failed Routes

- [Johnny Gun\\*](#) [22]
- [The Great Devoid\\*\\*](#) [22]
- [Celluloid Hero](#) [21!]
- [Your Hovercraft Is Ful...](#) [20!]
- [Carnivore](#) [27!]
- [Tally-Ho The Fox](#) [23!]
- [Gymp is Sleeping](#) [21]

### The Ugly

Lowest Quality Routes

- [Meandering Maze](#) [13]
- [The Big Nothing](#) [11]
- [Lilliputian](#) [14]
- [Don Juan's Appendix](#) [12]
- [The Forgotten Name](#) [16]
- [Over De'void](#) [16]
- [Prima Diva](#) [18]

### Icons

Icon Climbs by Grade

- 13 [The Great Barrier Reef\\*](#)
- 15 [Miss Kandy Kane](#)
- 16 [Choss And Chickenheads](#)
- 17 [2,4,5 T](#)
- 18 [Private Investigation\\*](#)
- 19 [Looking For The Sun\\*](#)
- 21 [Uzis On Speed\\*](#)
- 22 [The Great Devoid\\*\\*](#)
- 23 [Hate Crimes](#)
- 24 [Predator](#)
- 25 [Losing Fingers](#)

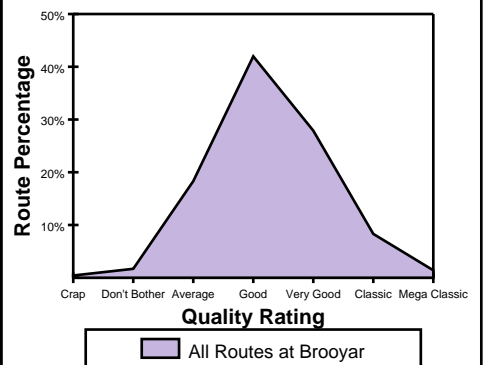
### Busiest Routes

Routes with Highest Tick Rate

- [Miss Kandy Kane](#) [15]
- [The Great Barrier Reef\\*](#) [13]
- [Looking For The Sun\\*](#) [19]
- [New Day Rising](#) [16]
- [The Great Devoid\\*\\*](#) [22]
- [Coco Pops](#) [15!]
- [Herb's In The Fernery](#) [18]
- [It's A Long Way To Tip...](#) [16]
- [The Pioneer](#) [16!]
- [Over De'void](#) [16]
- [Book Em' Danno](#) [13]
- [Your Hovercraft Is Ful...](#) [20!]
- [Digit Crucifixion](#) [18]
- [The End Is Nigh](#) [13]
- [Don Juan's Appendix](#) [12]
- [The Cornflake Climb](#) [17!]
- [Thanks For The Fish](#) [17]
- [Uzis On Speed\\*](#) [21]
- [Reid](#) [19!]
- [The Girl Who Lives On ...](#) [17]

### Ticks by Style

Quality Ratings



Source: [www.thecrag.com](http://www.thecrag.com) (distributed by [qurank](#))

For more detail on this and other crags, including information tailored to your interest and ability, create a free account at [www.thecrag.com](http://www.thecrag.com).

**WARNING:** CLIMBING IS EXTREMELY DANGEROUS AND CAN RESULT IN SERIOUS INJURY OR DEATH. READ THE DISCLAIMER ON THE SUBSEQUENT PAGE BEFORE USING THIS DOCUMENT. DO NOT DISTRIBUTE THIS DOCUMENT WITHOUT THE DISCLAIMER. DO NOT USE THE DOCUMENT WITHOUT THE DISCLAIMER.



# Crag Snapshot: Brooyar

November 19, 2006, Version 1.04  
Grade Context: Australian (Ewbanks)  
Account: qurank

## Further Information

This section is reserved for future use. More information will be provided about the area.

## Guidebooks and Local Businesses

Below are some guidebooks and businesses for the area as listed in thecrag.com's guidebook database and business directory. Guidebook listings are free, business listings are paid listings. The number of climbs each guidebook covers is also shown. A maximum of 20 guidebooks are shown in the list.

### Guidebooks

- [The Original Queensland Climbing Reference](#) (72)
- [Pocket RockGUIDE, The Rock](#) (1)

### Climbing Gyms

no listings

### Websites

- [qurank](#), Brisbane
- [To Keep You From Falling - Matt Boulton](#), .61 411 864 111  
PO Box 1503 Fortitude Valley 4006
- [Safer Cliffs Victoria](#), .0421994290

### Stores

no listings

### Guiding & Instruction

no listings

### Accommodation

no listings

### Eating Out

no listings

### Gear

- [www.climbinganchors.com](#), .0422 105 510

### Tourism & Travel

no listings

## Disclaimer

1. Climbing is extremely dangerous and can result in serious injury or death. Your use of the Crag Snapshot document indicates your assumption of the risk that it may contain errors and an acknowledgement of your own sole responsibility for your climbing safety.
2. The information provided in the Crag Snapshot has been extracted from the index of climbs at [www.thecrag.com](#). This information has not been verified, and may contain errors or be misleading.
3. Grade information presented in Crag Snapshot is an aggregate grade based on combining one or more of the contributing sources to the index of climbs. An '!' (exclamation mark) to the right of the grade indicates the grade is presented in a different grading system to the document or that there is a grade discrepancy between contribution resources at the time when the report was produced. Please note that there may be climb grade disagreements in the climbing community and no exclamation mark displayed.
4. Climbing stars are presented, from 0 to 3 to the right of the climb name, and are based on the Quality Score of the climb which is itself based on user quality contributions (from 'Crap' to 'Mega Classic') and comments on the site. Not all climbs have a Quality Score, in which case no star rating is presented.
5. This document is for personal use only. Use of this document, information in the document (in whole or part) for commercial purposes is strictly forbidden.
6. You may distribute this document in print or electronic format, provided that you are a registered distributor. Cobranding is available for registered distributors. For instructions on how to become a registered distributor send an email enquiry to [support@thecrag.com](mailto:support@thecrag.com).
7. Do not use this document for any purpose after three months have elapsed since its creation.