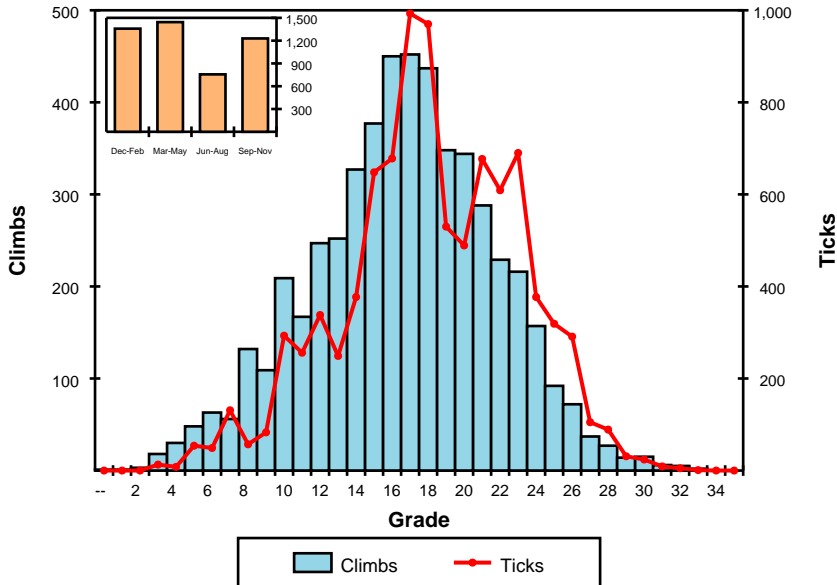


## Climbs and Ticks by Grade and by Season



## Route Statistics

Number of routes: 5,596  
Number of ticks: 10,390 (38% climbs ticked)

Hardest: [The Wheel Of Life](#) [V16]  
Busiest: [Waxman](#) [11]  
Highest Quality: [Genesis](#)\*\*\* [23]

Average Free Grade: 17  
Average Length: 34 m (92% climbs with height)  
Average Quality: 4.6 (<10% climbs with quality score)

Number of Sport Routes: 69  
Number of Boulder Problems: 343  
Number of Aid Routes: 103  
Number of Ice Routes: 0

Statistics are based on available information in the index of climbs at [www.thecrag.com](http://www.thecrag.com). Processes exist to continually improve the quality of this information, but do not guarantee such quality. DO NOT USE THIS DOCUMENT IF IT IS MORE THAN 3 MONTHS OUT OF DATE.

### The Good Highest Quality Routes

1. [Genesis](#)\*\*\* [23]
2. [Us Esoterics](#)\*\*\* [23]
3. [Mr. Joshua](#)\*\*\* [26!]
4. [World Party Pitch 3](#)\*\*\* [24]
5. [The Ascension](#)\*\*\* [21]
6. [Mr. Joshua Pitch 1](#)\*\*\* [25]
7. [Passport to Insanity](#)\*\*\* [28!]

### The Bad Most Failed Routes

1. [Diazepam](#)\*\* [25]
2. [Soweto](#)\*\* [21]
3. [Manic Depressive](#)\* [25]
4. [Monkey Puzzle](#)\*\*\* [28!]
5. [Chasin' the Shadow](#)\*\* [27!]
6. [Spurting Mildly](#) [22]
7. [This Spurting Life](#) [26]

### The Ugly Lowest Quality Routes

1. [Ordinary Bolted Arete](#) [23]
2. [Ming](#) [10]
3. [Easier Puzzle](#) [10!]
4. [Psychotic DCNR](#) [22]
5. [Wimbleton](#) [14]
6. [Screaming Trees Variant](#) [21]
7. [American Anthrax Attack](#) [21!]

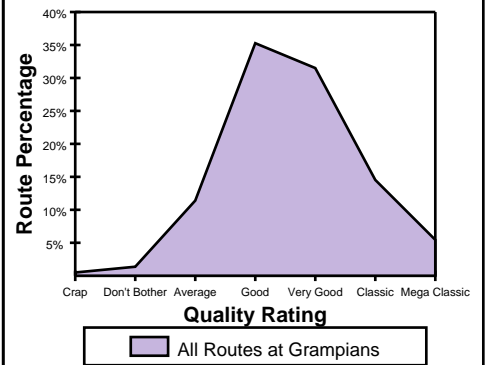
### Icons Icon Climbs by Grade

- 7 [Magic Mushroom](#)\*\*
- 10 [Epaminondas](#)
- 11 [Mixed Climb](#)
- 12 [Scarab](#)
- 13 [Power Dive](#)
- 14 [Monkey Man](#)\*
- 15 [Queen Bee](#)
- 16 [Basilisk Direct Finish](#)\*\*
- 17 [Sword in the Stone](#)\*\*
- 18 [Wirilda](#)\*\*
- 19 [Hard Times](#)\*\*
- 20 [Twentieth Century Fox](#)\*\*\*
- 21 [Soweto](#)\*\*
- 22 [Triptych](#)\*\*\*
- 23 [Sandinista](#)\*\*\*
- 24 [World Party Pitch 3](#)\*\*\*
- 25 [Mr. Joshua Pitch 1](#)\*\*\*
- 26 [Mr. Joshua](#)\*\*\*
- 27 [Chasin' the Shadow](#)\*\*
- 28 [Monkey Puzzle](#)\*\*\*

### Busiest Routes Routes with Highest Tick Rate

1. [Waxman](#) [11]
2. [Overkill](#) [17]
3. [Texas Radio and the Bi...](#) [17]
4. [De Blanc](#) [12]
5. [Regatta](#) [13]
6. [Flake of Fear](#) [15!]
7. [Soweto](#)\*\* [21]
8. [Blimp](#)\*\*\* [21!]
9. [Chain of Fools](#)\* [23]
10. [Tootsie](#) [19]
11. [An-tics](#) [10]
12. [Spurting Mildly](#) [22]
13. [Debutante](#)\*\* [14!]
14. [Rats Tail](#) [16]
15. [Halfway Hotel](#) [18]
16. [Weaveworld](#)\*\* [23]
17. [Steph In Soweto](#) [15]
18. [Two Tribes](#)\* [24]
19. [Terminal Insomnia](#)\* [22]
20. [Tootsie Direct](#) [22]

### Ticks by Style Quality Ratings



Source: [www.thecrag.com](http://www.thecrag.com) (distributed by Chockstone)

For more detail on this and other crags, including information tailored to your interest and ability, create a free account at [www.thecrag.com](http://www.thecrag.com).

**WARNING:** CLIMBING IS EXTREMELY DANGEROUS AND CAN RESULT IN SERIOUS INJURY OR DEATH. READ THE DISCLAIMER ON THE SUBSEQUENT PAGE BEFORE USING THIS DOCUMENT. DO NOT DISTRIBUTE THIS DOCUMENT WITHOUT THE DISCLAIMER. DO NOT USE THE DOCUMENT WITHOUT THE DISCLAIMER.



# Crag Snapshot: Grampians

November 19, 2006, Version 1.04  
Grade Context: Australian (Ewbanks)  
Account: Chockstone

## Further Information

This section is reserved for future use. More information will be provided about the area.

## Guidebooks and Local Businesses

Below are some guidebooks and businesses for the area as listed in thecrag.com's guidebook database and business directory. Guidebook listings are free, business listings are paid listings. The number of climbs each guidebook covers is also shown. A maximum of 20 guidebooks are shown in the list.

<p><b>Guidebooks</b></p> <p>South-Eastern Grampians, Chris Baxter (1,008) . . . . .</p> <p>North Grampians, Bill Andrews (969) . . . . .</p> <p>Grampians, Mentz &amp; Tempest (703). . . . .</p> <p>Interim SW Grampians, Talbett &amp; McIntosh (685) . . . . .</p> <p>North Grampians Update, Bill Andrews (447) . . . . .</p> <p>Pocket RockGUIDE, The Wonderland Range (431) . . . . .</p> <p>The Victoria Range, Kieran Loughran (390) . . . . .</p> <p>Pocket RockGUIDE, New Climbs in SE Grampians (303). . . . .</p> <p>Mt Difficult, McIntosh &amp; Andrews (288) . . . . .</p> <p>Mount Stapylton Ampitheatre, Kieran Loughran (234) . . . . .</p> <p>The Black Guide, Bill Andrews (218) . . . . .</p> <p>Pocket RockGUIDE, Black Ians Rocks, Central Gra... (210) . . . . .</p> <p>Wonderland Range, Bill Andrews (210) . . . . .</p> <p>Victoria, Chris Baxter (177). . . . .</p> <p>Pocket RockGUIDE, Mt Geryon &amp; The Acropolis (103) . . . . .</p> <p>Pocket RockGUIDE, The Rock (75). . . . .</p> <p>Pocket RockGUIDE, New Climbs Perth Update (56) . . . . .</p> <p>RockGUIDE, New Climbs Nowra Update (22) . . . . .</p> <hr/> <p><b>Climbing Gyms</b></p> <p>no listings . . . . .</p> <hr/> <p><b>Websites</b></p> <p>Safer Cliffs Victoria, . . . . .,0421994290</p> <p>qurank, . . . . .</p> <p>Brisbane</p> <p>To Keep You From Falling - Matt Boulton, . . . . .,61 411 864 111</p> <p>PO Box 1503 Fortitude Valley 4006</p> <hr/> <p><b>Stores</b></p> <p>no listings . . . . .</p>	<p><b>Guiding &amp; Instruction</b></p> <p>no listings . . . . .</p> <hr/> <p><b>Accommodation</b></p> <p>no listings . . . . .</p> <hr/> <p><b>Eating Out</b></p> <p>no listings . . . . .</p> <hr/> <p><b>Gear</b></p> <p><a href="http://www.climbinganchors.com">www.climbinganchors.com</a> . . . . .,0422 105 510</p> <hr/> <p><b>Tourism &amp; Travel</b></p> <p>no listings . . . . .</p>
---	---

## Disclaimer

1. Climbing is extremely dangerous and can result in serious injury or death. Your use of the Crag Snapshot document indicates your assumption of the risk that it may contain errors and an acknowledgement of your own sole responsibility for your climbing safety.
2. The information provided in the Crag Snapshot has been extracted from the index of climbs at www.thecrag.com. This information has not been verified, and may contain errors or be misleading.
3. Grade information presented in Crag Snapshot is an aggregate grade based on combining one or more of the contributing sources to the index of climbs. An '!' (exclamation mark) to the right of the grade indicates the grade is presented in a different grading system to the document or that there is a grade discrepancy between contribution resources at the time when the report was produced. Please note that there may be climb grade disagreements in the climbing community and no exclamation mark displayed.
4. Climbing stars are presented, from 0 to 3 to the right of the climb name, and are based on the Quality Score of the climb which is itself based on user quality contributions (from 'Crap' to 'Mega Classic') and comments on the site. Not all climbs have a Quality Score, in which case no star rating is presented.
5. This document is for personal use only. Use of this document, information in the document (in whole or part) for commercial purposes is strictly forbidden.
6. You may distribute this document in print or electronic format, provided that you are a registered distributor. Cobranding is available for registered distributors. For instructions on how to become a registered distributor send an email enquiry to support@thecrag.com.
7. Do not use this document for any purpose after three months have elapsed since its creation.