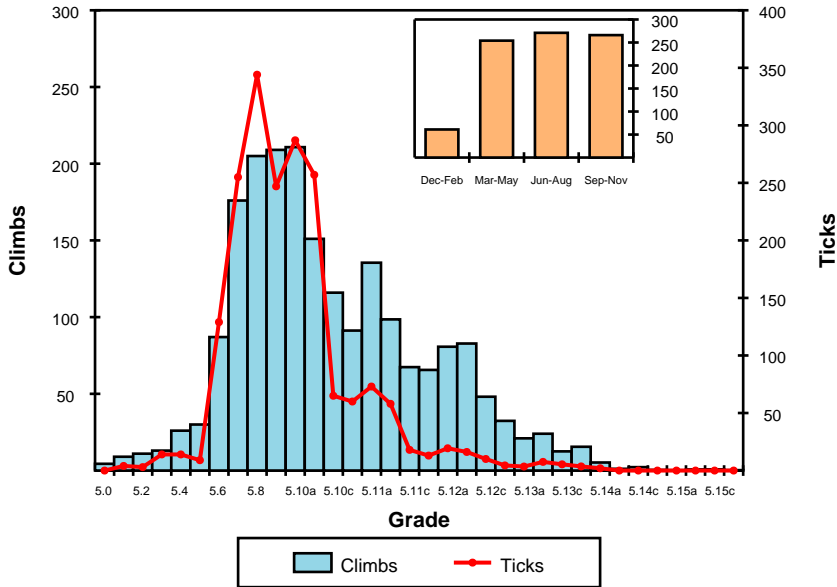


Climbs and Ticks by Grade and by Season



Route Statistics

Number of routes: 2,245
 Number of ticks: 1,953 (24% climbs ticked)

Hardest: [Project 2](#) [5.15]
 Busiest: [Five Gallon Buckets](#) [5.8]
 Highest Quality: [Heinous Cling, 1st anchor**](#) [5.12a]

Average Free Grade: 5.10b
 Average Length: 41 m (10% climbs with height)
 Average Quality: 4.4 (<10% climbs with quality score)

Number of Sport Routes: 337
 Number of Boulder Problems: 171
 Number of Aid Routes: 54
 Number of Ice Routes: 0

Statistics are based on available information in the index of climbs at www.thecrag.com. Processes exist to continually improve the quality of this information, but do not guarantee such quality. DO NOT USE THIS DOCUMENT IF IT IS MORE THAN 3 MONTHS OUT OF DATE.

The Good Highest Quality Routes

1. [Heinous Cling, 1st anchor**](#) [5.12a]
2. [Sunset Slab**](#) [5.9]
3. [Moonshine Dihedral**](#) [5.9]
4. [Zebra**](#) [5.10a]
5. [Lion Zion**](#) [5.10c]
6. [Pack Animal Direct**](#) [5.10b]
7. [Overboard p1*](#) [5.11b]

The Bad Most Failed Routes

1. [Embryonic](#) [5.11d]
2. [Ain't No Gimme](#) [5.9]

The Ugly Lowest Quality Routes

1. [North Slab Crack](#) [5.3!]
2. [#5](#) [5.3]
3. [Right Slab Crack](#) [5.6]
4. [Bookworm](#) [5.7]
5. [Left Slab Crack](#) [5.4]
6. [Prom Night](#) [5.7]
7. [How Low Can You Go?](#) [5.6]

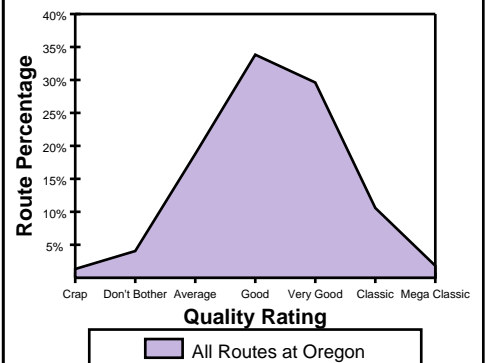
Icons Icon Climbs by Grade

- 5.6 [Pioneer Route*](#)
- 5.7 [Spiderman*](#)
- 5.8 [West Face Variation*](#)
- 5.9 [Sunset Slab**](#)
- 5.10a [Zebra**](#)
- 5.10b [Pack Animal Direct**](#)
- 5.10c [Lion Zion**](#)
- 5.10d [Thai Stick*](#)
- 5.11a [Magic Light p1*](#)
- 5.11b [Overboard p1*](#)
- 5.11d [Ring of Fire](#)
- 5.12a [Heinous Cling, 1st anchor**](#)

Busiest Routes Routes with Highest Tick Rate

1. [Five Gallon Buckets](#) [5.8]
2. [Light on the Path](#) [5.10a!]
3. [Phoenix](#) [5.10a]
4. [Revelations](#) [5.9]
5. [Cinnamon Slab](#) [5.6]
6. [Hop on Pop](#) [5.8]
7. [Lichen It](#) [5.7]
8. [Peanut Brittle](#) [5.8]
9. [Bunny Face](#) [5.7]
10. [Barbecue the Pope](#) [5.10b]
11. [Spiderman*](#) [5.7]
12. [Pop Goes the Nubbin](#) [5.10a]
13. [Gumby](#) [5.10b]
14. [Screaming Yellow Zonkers](#) [5.10b!]
15. [Easy Reader](#) [5.6]
16. [Dancer](#) [5.7]
17. [Jete](#) [5.8]
18. [Irreverence](#) [5.10a]
19. [How Low Can You Go?](#) [5.6]
20. [Outsiders](#) [5.9!]

Ticks by Style Quality Ratings



Source: www.thecrag.com

For more detail on this and other crags, including information tailored to your interest and ability, create a free account at www.thecrag.com.

WARNING: CLIMBING IS EXTREMELY DANGEROUS AND CAN RESULT IN SERIOUS INJURY OR DEATH. READ THE DISCLAIMER ON THE SUBSEQUENT PAGE BEFORE USING THIS DOCUMENT. DO NOT DISTRIBUTE THIS DOCUMENT WITHOUT THE DISCLAIMER. DO NOT USE THE DOCUMENT WITHOUT THE DISCLAIMER.



Crag Snapshot: Oregon

November 19, 2006, Version 1.04
Grade Context: American (Yosemite Decimal System)
Account: Nobody

Further Information

This section is reserved for future use. More information will be provided about the area.

Guidebooks and Local Businesses

Below are some guidebooks and businesses for the area as listed in thecrag.com's guidebook database and business directory. Guidebook listings are free, business listings are paid listings. The number of climbs each guidebook covers is also shown. A maximum of 20 guidebooks are shown in the list.

Guidebooks

- [Climber's Guide to Smith Rock](#) (1,076)
- [Rock Climbing Southwest Oregon](#) (663).
- [Rock 'N Road: Rock Climbing Areas of North America](#) (16) . . .

Climbing Gyms

no listings

Stores

no listings

Guiding & Instruction

no listings

Accommodation

no listings

Eating Out

no listings

Tourism & Travel

no listings

Disclaimer

1. Climbing is extremely dangerous and can result in serious injury or death. Your use of the Crag Snapshot document indicates your assumption of the risk that it may contain errors and an acknowledgement of your own sole responsibility for your climbing safety.
2. The information provided in the Crag Snapshot has been extracted from the index of climbs at www.thecrag.com. This information has not been verified, and may contain errors or be misleading.
3. Grade information presented in Crag Snapshot is an aggregate grade based on combining one or more of the contributing sources to the index of climbs. An '!' (exclamation mark) to the right of the grade indicates the grade is presented in a different grading system to the document or that there is a grade discrepancy between contribution resources at the time when the report was produced. Please note that there may be climb grade disagreements in the climbing community and no exclamation mark displayed.
4. Climbing stars are presented, from 0 to 3 to the right of the climb name, and are based on the Quality Score of the climb which is itself based on user quality contributions (from 'Crap' to 'Mega Classic') and comments on the site. Not all climbs have a Quality Score, in which case no star rating is presented.
5. This document is for personal use only. Use of this document, information in the document (in whole or part) for commercial purposes is strictly forbidden.
6. You may distribute this document in print or electronic format, provided that you are a registered distributor. Cobranding is available for registered distributors. For instructions on how to become a registered distributor send an email enquiry to support@thecrag.com.
7. Do not use this document for any purpose after three months have elapsed since its creation.