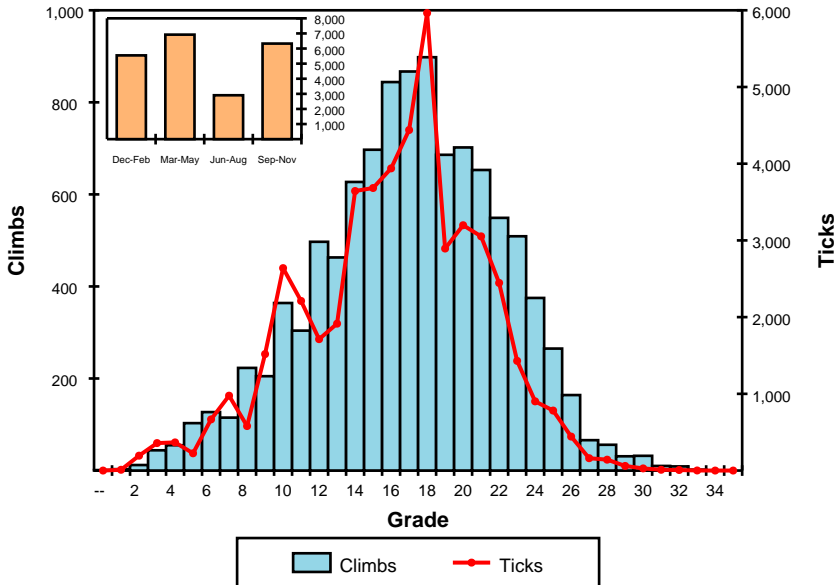


Climbs and Ticks by Grade and by Season



Route Statistics

Number of routes: 11,068
Number of ticks: 53,807 (48% climbs ticked)

Hardest: [The Wheel Of Life](#) [V16]
Busiest: [D Minor](#)* [14!]
Highest Quality: [Genesis](#)*** [23]

Average Free Grade: 17
Average Length: 32 m (94% climbs with height)
Average Quality: 4.4 (14% climbs with quality score)

Number of Sport Routes: 70
Number of Boulder Problems: 396
Number of Aid Routes: 208
Number of Ice Routes: 0

Statistics are based on available information in the index of climbs at www.thecrag.com. Processes exist to continually improve the quality of this information, but do not guarantee such quality. DO NOT USE THIS DOCUMENT IF IT IS MORE THAN 3 MONTHS OUT OF DATE.

The Good Highest Quality Routes

- [Genesis](#)*** [23]
- [India](#)*** [28!]
- [Tjuringa](#)*** [25]
- [Us Esoterics](#)*** [23]
- [Mind Arthritis](#)*** [27!]
- [Yesterday](#)*** [26!]
- [Ozymandias Original](#)*** [M4]

The Bad Most Failed Routes

- [Kachoong](#)*** [21]
- [Snatch and Grab](#) [21!]
- [Have A Good Flight](#)** [25]
- [Diazepam](#)** [25]
- [Pilot Error](#) [21!]
- [The Fortress](#)* [26]
- [Cumelittle](#) [24]

The Ugly Lowest Quality Routes

- [Rock Soff](#) [13]
- [Ordinary Bolted Arete](#) [23]
- [Sir George](#) [13]
- [Sling Shot](#) [13]
- [Sky Pilot](#) [13]
- [Ming](#) [10]
- [Easier Puzzle](#) [10!]

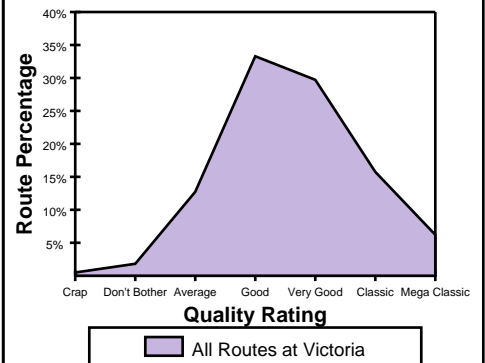
Icons Icon Climbs by Grade

- [Tiptoe Ridge](#)**
- [Exodus](#)*
- [Magic Mushroom](#)**
- [Siren](#)*
- [Archnus Variant \(Mine...\)](#)**
- [Agamemnon](#)**
- [Blockbuster](#)*
- [Bard](#)**
- [Muldoon](#)**
- [Lampighter](#)**
- [Beautiful Possibilities](#)*
- [The Watchtower Crack](#)***
- [Mari](#)*
- [Skink](#)***
- [Tannin](#)***
- [Thunder Crack](#)**
- [Kachoong](#)***
- [Triptych](#)***
- [Birdman of Alcatraz](#)***
- [World Party Pitch 3](#)***

Busiest Routes Routes with Highest Tick Rate

- [D Minor](#)* [14!]
- [Muldoon](#)** [13]
- [Bard](#)** [12]
- [Piccolo](#) [11]
- [Swinging](#) [17]
- [Little Thor](#)* [20]
- [D Major](#) [10!]
- [Agamemnon](#)** [10!]
- [Conifer Crack](#) [9]
- [Horn Piece](#) [13]
- [The Golden Fleece](#)* [18!]
- [Marmot's Mall](#) [16!]
- [Archnus](#)* [9!]
- [Tannin](#)*** [19]
- [Skink](#)*** [18!]
- [Maximus](#) [17!]
- [Trapeze](#) [11]
- [Camelot](#) [10]
- [The Watchtower Crack](#)*** [16!]
- [Beautiful Possibilities](#)* [15]

Ticks by Style Quality Ratings



Source: www.thecrag.com (distributed by Chockstone)

For more detail on this and other crags, including information tailored to your interest and ability, create a free account at www.thecrag.com.

WARNING: CLIMBING IS EXTREMELY DANGEROUS AND CAN RESULT IN SERIOUS INJURY OR DEATH. READ THE DISCLAIMER ON THE SUBSEQUENT PAGE BEFORE USING THIS DOCUMENT. DO NOT DISTRIBUTE THIS DOCUMENT WITHOUT THE DISCLAIMER. DO NOT USE THE DOCUMENT WITHOUT THE DISCLAIMER.



Crag Snapshot: Victoria

November 19, 2006, Version 1.04
Grade Context: Australian (Ewbanks)
Account: Chockstone

Further Information

This section is reserved for future use. More information will be provided about the area.

Guidebooks and Local Businesses

Below are some guidebooks and businesses for the area as listed in thecrag.com's guidebook database and business directory. Guidebook listings are free, business listings are paid listings. The number of climbs each guidebook covers is also shown. A maximum of 20 guidebooks are shown in the list.

Guidebooks	Stores
Arapiles/Djurite, Louise Shepherd (1,934)	no listings
Arapiles, Mentz & Tempest (1,026)	Guiding & Instruction
South-Eastern Grampians, Chris Baxter (1,008)	no listings
North Grampians, Bill Andrews (969)	Accommodation
Grampians, Mentz & Tempest (703).	no listings
Mt Buffalo, Boreham & Brereton (703)	Eating Out
Interim SW Grampians, Talbett & McIntosh (685)	no listings
Melbourne, Eastern District, Tempest & Smith (509)	Gear
Pocket RockGUIDE, The You Yangs (495)	www.climbinganchors.com0422 105 510
North Grampians Update, Bill Andrews (447)	Tourism & Travel
Pocket RockGUIDE, The Wonderland Range (431)	no listings
The Victoria Range, Kieran Loughran (390)	
Eastern Victoria, Simon Todman (319)	
Pocket RockGUIDE, New Climbs in SE Grampians (303).	
Victoria, Chris Baxter (298).	
Mt Difficult, McIntosh & Andrews (288)	
Pocket RockGUIDE, Black Hill, Camels Hump, Hang... (271).	
Northwest Victoria, Watson, Andrews & Hampton (246)	
Mount Stapylton Ampitheatre, Kieran Loughran (234)	
Climbing Gyms	
no listings	
Websites	
qurank,	
Brisbane	
Safer Cliffs Victoria,0421994290	
To Keep You From Falling - Matt Boulton, . . .61 411 864 111	
PO Box 1503 Fortitude Valley 4006	

Disclaimer

1. Climbing is extremely dangerous and can result in serious injury or death. Your use of the Crag Snapshot document indicates your assumption of the risk that it may contain errors and an acknowledgement of your own sole responsibility for your climbing safety.
2. The information provided in the Crag Snapshot has been extracted from the index of climbs at www.thecrag.com. This information has not been verified, and may contain errors or be misleading.
3. Grade information presented in Crag Snapshot is an aggregate grade based on combining one or more of the contributing sources to the index of climbs. An '!' (exclamation mark) to the right of the grade indicates the grade is presented in a different grading system to the document or that there is a grade discrepancy between contribution resources at the time when the report was produced. Please note that there may be climb grade disagreements in the climbing community and no exclamation mark displayed.
4. Climbing stars are presented, from 0 to 3 to the right of the climb name, and are based on the Quality Score of the climb which is itself based on user quality contributions (from 'Crap' to 'Mega Classic') and comments on the site. Not all climbs have a Quality Score, in which case no star rating is presented.
5. This document is for personal use only. Use of this document, information in the document (in whole or part) for commercial purposes is strictly forbidden.
6. You may distribute this document in print or electronic format, provided that you are a registered distributor. Cobranding is available for registered distributors. For instructions on how to become a registered distributor send an email enquiry to support@thecrag.com.
7. Do not use this document for any purpose after three months have elapsed since its creation.